



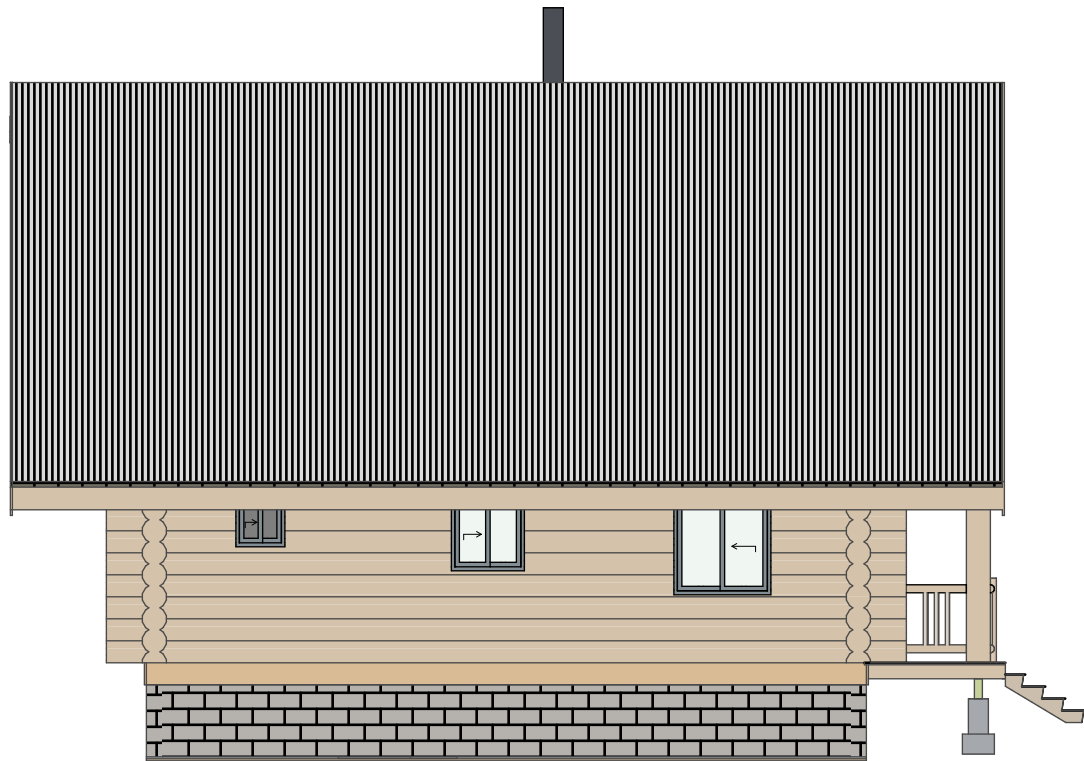
NORTH ELEVATION

SCALE: 1/8" = 1'-0"



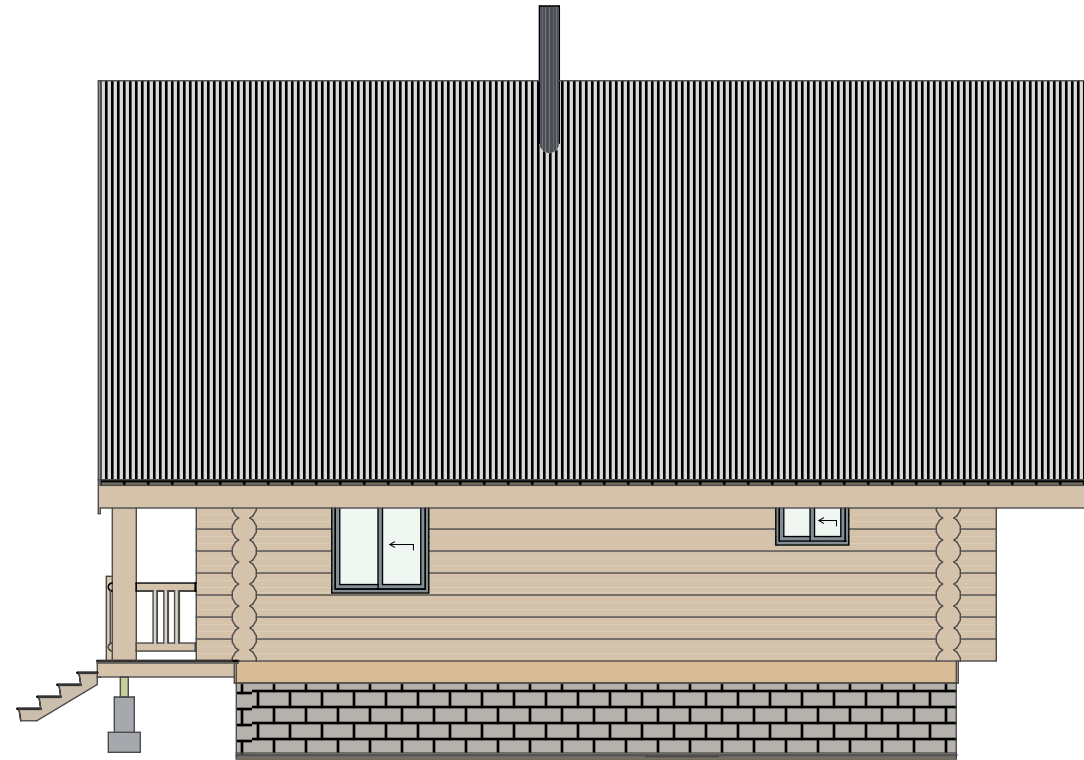
SOUTH ELEVATION

SCALE: 1/8" = 1'-0"



EAST ELEVATION

SCALE: 1/8" = 1'-0"

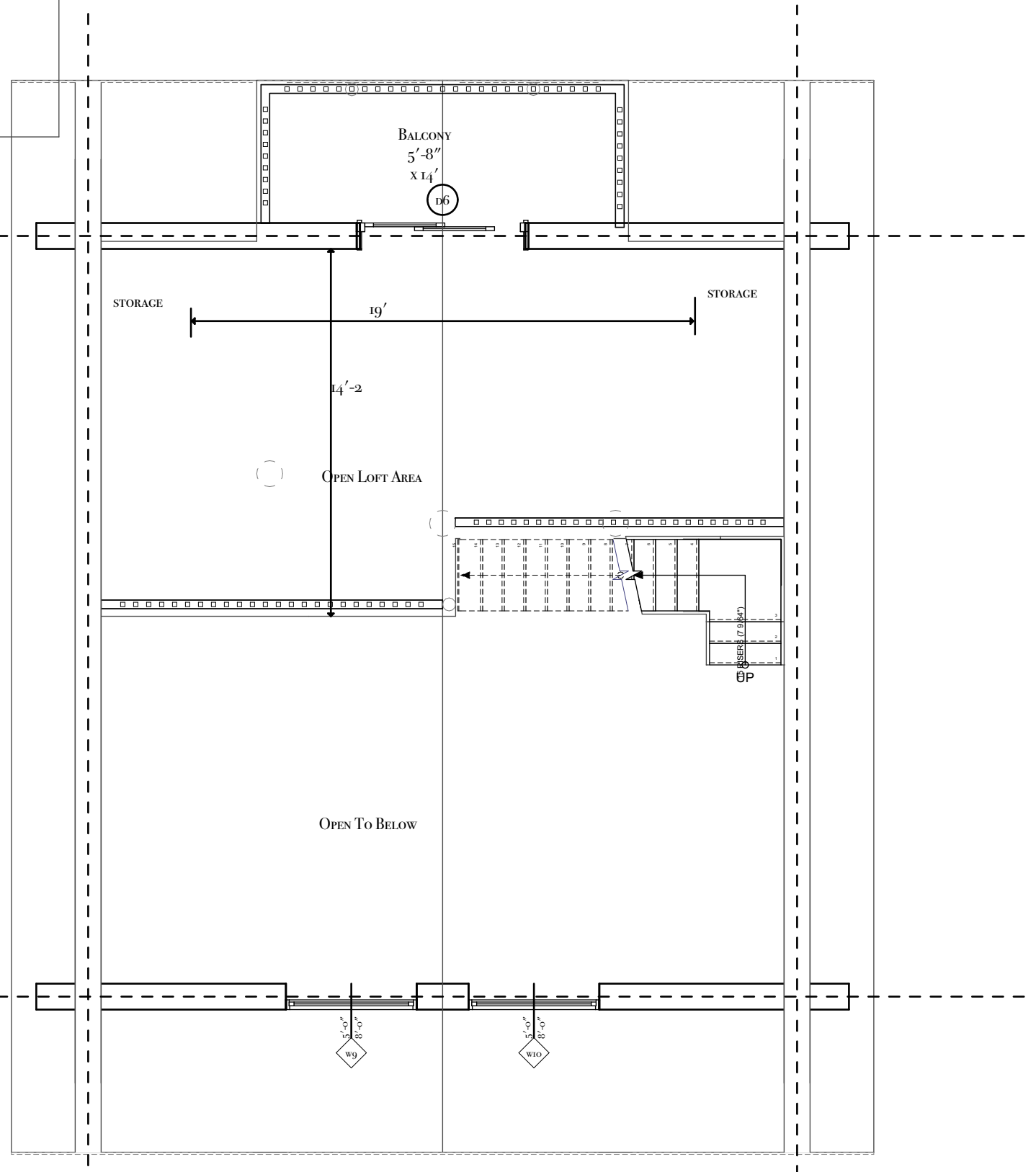
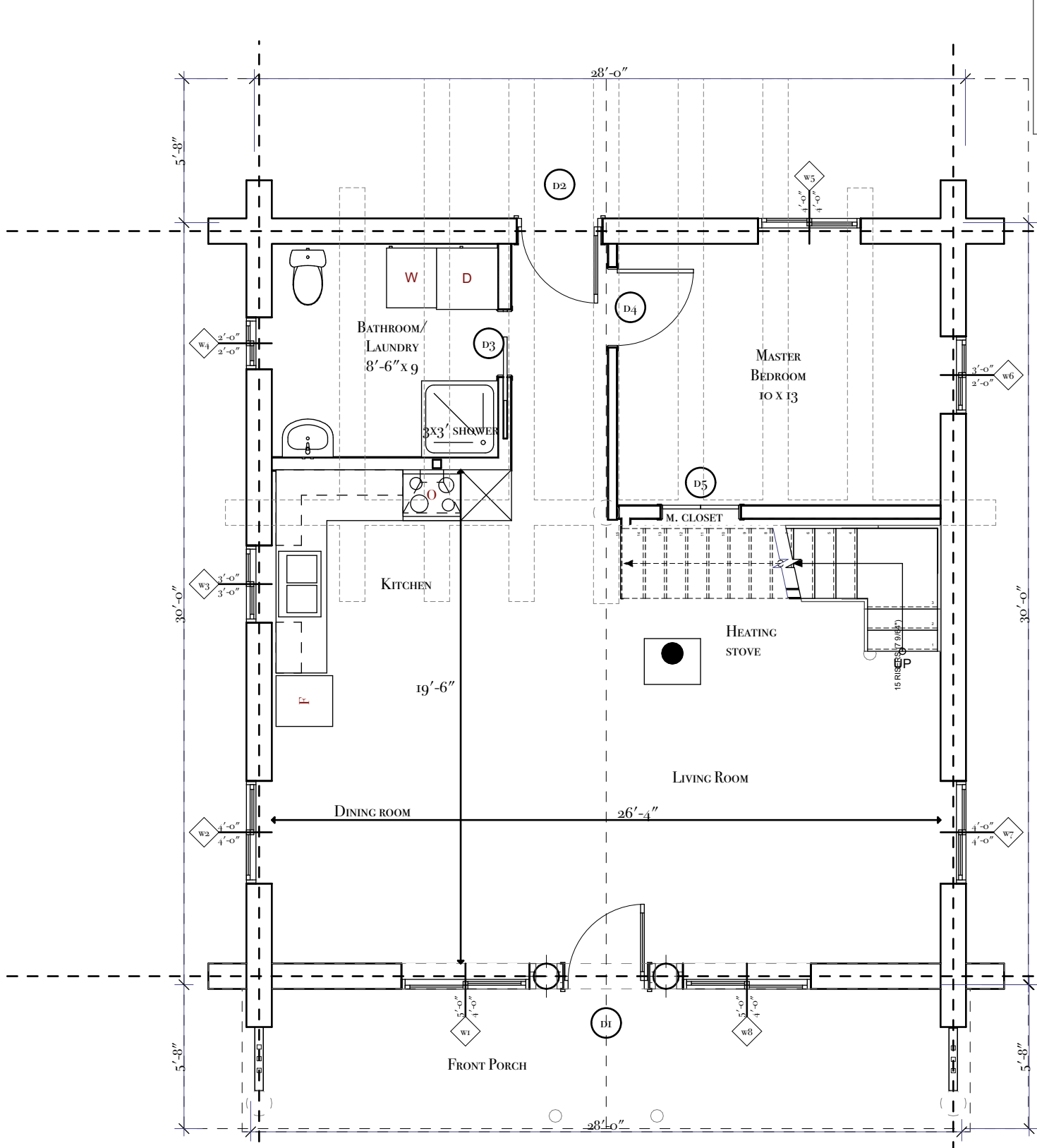


WEST ELEVATION

SCALE: 1/8" = 1'-0"

SQUARE FOOTAGE	
MAIN	840
LOFT	378
TOTAL	1218

COUNTY	
IDAHO	
GROUND SNOW LOAD:	53
FROST DEPTH:	24"



MAIN FLOOR PLAN

SCALE: 3/16" = 1'-0"

LOFT FLOOR

SCALE: 3/16" = 1'-0"